



National Outlook for Automation in the Home

AppTrack[®]

Instruction Manual

Project NOAH
Center for Research on Information Technology
and Organizations (CRITO)
University of California, Irvine
<http://www.crito.uci.edu/noah>

PROJECT NOAH II

AppTrack Instruction Manual

This manual provides instructions for installing and using AppTrack. Please read the entire instruction manual before installing AppTrack on your computer. A copy of this manual can be found on our website: <http://www.crito.uci.edu/noah>.

AppTrack is copyrighted software developed by the University of California, Irvine and supported by a grant from the National Science Foundation.

Project Personnel

- | | |
|---|---|
| ❖ Alladi Venkatesh, Ph.D.
<i>avenkate@uci.edu</i> | Principal Investigator |
| ❖ Debora E. Dunkle, Ph.D.
<i>dedunkle@uci.edu</i> | Research Specialist |
| ❖ Eric Shih, M.B.A.
<i>eshih@uci.edu</i> | Research Associate & contact for AppTrack |

Project Address

If you have any questions regarding AppTrack, please contact Eric Shih at:

Project NOAH II
CRITO
University of California, Irvine
3200 Berkeley Place
Irvine, CA 92697-4650
Tel: (949) 824-4932
Fax: (949) 824-8091
<http://www.crito.uci.edu/noah>

TABLE OF CONTENTS

I. Introduction	3
II. Installing AppTrack	4
III. Answering AppTrack's Question	6
IV. Downloading Data	10
V. Stopping or Uninstalling AppTrack	14
VI. About Project NOAH	16

I. INTRODUCTION

Thank you for participating in the Computer Usage Tracking Study for Project NOAH II conducted by the University of California and supported by a grant from the National Science Foundation. For this study, we are asking you to install a software called **AppTrack**. The information generated by this software will assist us in understanding patterns of computer use and changes over time. What AppTrack does is to record:

1. who the users are,
2. what software they are using,
3. time and date of usage, and
4. the reason(s) for use.

AppTrack will not record anything else such as the specific web site visited or other personal information. A sample of the information AppTrack logs from your computer is shown in Section IV - Downloading Data.

To minimize your effort, most of the recording will be done automatically by AppTrack. However, you will be prompted to answer a brief question each time that you exit from a software application. Specific instructions are provided in Section III.

Installing and using AppTrack will not interfere with any software you are using or alter your computer's performance. For the most part, AppTrack will be invisible to you and you will not notice it until it asks you to input specific information. However, should you notice any incompatibility with your computer system, please uninstall AppTrack (see Section V) immediately and contact us at:

Eric Shih, Research Associate
Project NOAH II
CRITO
University of California, Irvine
3200 Berkeley Place
Irvine, CA 92697-4650
Tel: (949) 824-4932
Fax: (949) 824-8091
E-mail: eshih@uci.edu

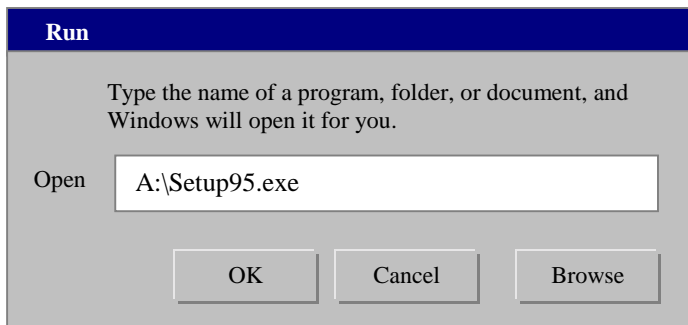
II. INSTALLING APPTRACK

IMPORTANT: AppTrack can only be installed on PCs running Windows 3.1 or Windows 95/98. Make sure your computer is running one of these operating systems before installing AppTrack.

For Windows 95/98:

1. Insert the AppTrack Program Disk in your floppy disk drive.
2. In your **Start** menu, choose **Run**. You should see a window like the one shown in Figure 1.

Figure 1



3. Type "A:\Setup95.exe" in the box.
4. Click **OK**.

For Windows 3.1:

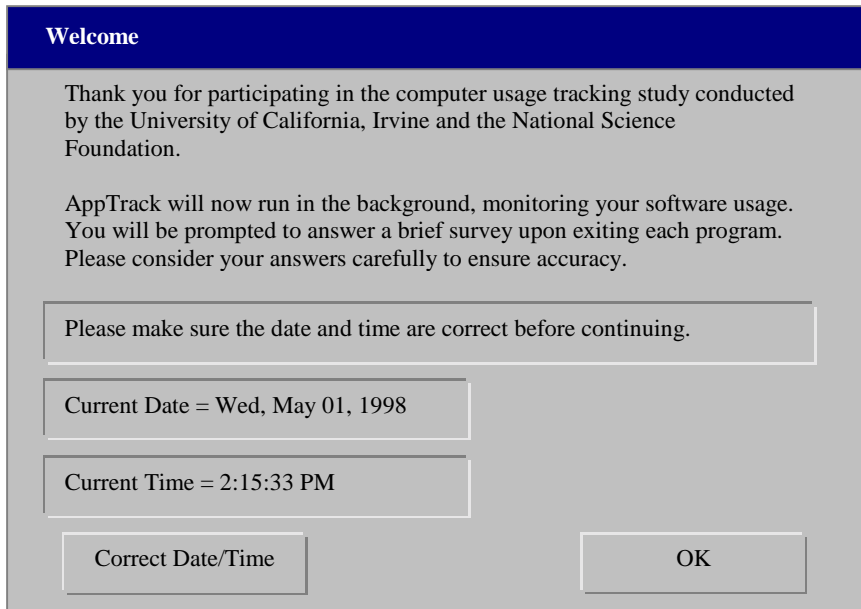
1. Insert the AppTrack Program Disk in your floppy disk drive.
2. In your File Manager, go to the A:\ drive.
3. Double click "A:\Setup31.exe".

The software will automatically install itself. **After you install it, you will need to restart your computer so AppTrack can start running.**

When you restart your computer, AppTrack will be running in the background and you will see a Welcome window like the one shown in Figure 2. At this time, please follow the instructions in the "Welcome" window to proceed.

Each time you turn on your computer, AppTrack will ask you to check the current date and time. If the date and time are correct, just click **OK**. Otherwise, click **Correct Date/Time** and follow the instructions on your screen.

Figure 2



You may now go ahead and use your computer as you normally would. When you exit from a program, AppTrack will show up again and ask you for some information (see Figure 3). A program may include such things as MS Word, games, home banking software, etc. On the next page are the instructions for what you should do when AppTrack asks you a question about the program you just exited.

III. ANSWERING APPTRACK'S QUESTION

Whenever you exit from a software program, a box like the one shown in Figure 3 will appear.

Figure 3

AppTrack-Query

Microsoft Word

Select your name from the list below.

Albert

Betty

Charles

Donna

Eric

Guest

This is an example of a name, which may be different from the names and people in your household.

For which of the following reasons did you use this program?

Job / Work Related

Educational / Self-enhancement

Entertainment / Games / Hobbies

Home and Personal Use

Other

Internet / Email Applications

Utilities Software

OK

In Figure 3, AppTrack is asking for your name and reason(s) for using this program. You should see your name come up in the window. Simply click the button next to your name. You will also need to select from the choices provided on the right and click **OK**. You may select more than one reason for those times when you are using the software for multiple purposes. For example, if you just used MS Word to write a school paper and also to work on a company report, you would select both **Job/Work Related** and **Educational**.

To avoid confusion, we have provided a short explanation for each of the options. But whenever you are in doubt, just use your best judgment.

Job/Work Related Any time you use a particular software for the specific purpose of job related work or anything that has to do with your employment, you should select this option.

Educational /Self-enhancement Any time you use a particular software for educational purposes such as doing your schoolwork or just learning new things and updating your skills, you should choose this option.

Entertainment / Games / Hobbies Any time you use a particular software for recreational purposes such as playing video games, listening to CDs, or just using it to have fun, you should choose this option.

Home and Personal Use Choose this option if your reason for using this software is to assist in household and personal management such as balancing your checkbook, looking up a friend's phone number, keeping track of your appointments, writing letters, typing recipes, etc.

Other Choose this option when the reason you used the particular software does not fit into the above categories.

Internet/Email Applications If you are using special software from your Internet service provider, such as AOL, to browse the Internet or from your bank to do home banking, then choose

Internet/Email Applications. Once you click on this option the computer will prompt you with another window as shown in Figure 4. Refer to page 8 for further explanations.

Utility Software All computers have utility programs that help the computer or other software to run. An example of a utility software is Dial-Scripting Tool that you may have used to make a phone call that lets you log on to the Internet. Another example would be anti-virus programs such as Norton Utilities that you may have installed.

For programs that have been identified as **Internet/Email Applications**, you will be asked the question shown in Figure 4.

Figure 4

AppTrack-Query (Internet)

Netscape

Select your name from the list below. For which of the following reasons did you use the Internet?

Albert

Betty

Charles

Donna

Eric

Guest

Communication

Personal

Work / Other

Job / Work Related

Educational / Self-enhancement

Games / Entertainment / Hobbies

On-line Shopping / Product Search

Stocks / On-line Banking

News and Sports

Travel and Vacation Planning

Other

OK

Again, please respond by selecting from the options provided and click **OK**. You may select more than one option if you use the Internet application for more than one purpose. For example, if you just used Netscape to catch up on sports scores and to do some on-line shopping, select both **News and Sports** and **On-line Shopping**. A brief explanation of each option is provided on the next page. Again, if you are unsure, please use your best judgment.

Communication If you are using the Internet for email, please select from options under communication. If the email is for personal correspondence, select **Personal**. If the email is for work or other purposes, select **Work / Other**. If you used it for both, select both.

Job / Work Related Any time you use the Internet for the specific purpose of job related work or anything that has to do with your employment, you should select this option.

Educational / Self-enhancement Any time you use the Internet for educational purposes such as researching for a school report or just learning new things and updating your skills, you should choose this option.

Entertainment / Games / Hobbies Any time you use the Internet for recreational purposes such as playing video games, downloading a piece of music, or just using it to have fun, you should choose this option.

On-line Shopping / Product Search Choose this option if your reason for using the Internet was to look for product or company information or to do some on-line shopping. You don't have to actually purchase anything to select this option.

Stocks / On-line Banking If you are using the Internet to buy and/or sell stock, check the stock market, or do any banking transactions, you should choose this option.

News and Sports Whenever you use the Internet to find out about the news (including the weather) or check out the latest sports updates, you should choose this option.

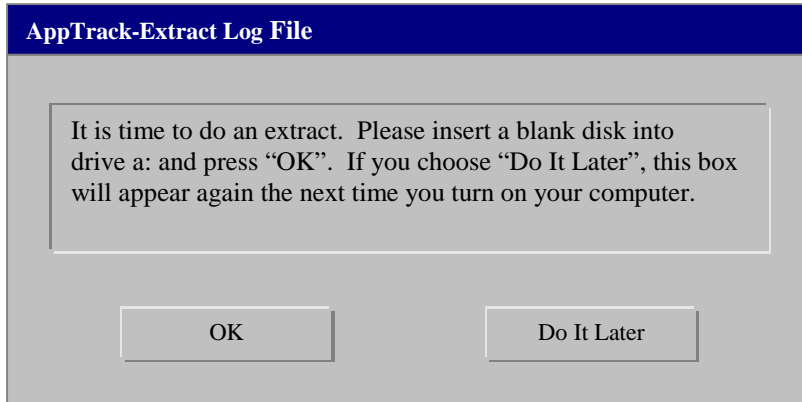
Travel and Vacation Planning When you use the Internet to make travel reservations (airlines/hotel/car rentals, etc.), to check flight schedules or just to plan your next vacation, you should choose this option.

Other Choose this option when the reasons you used the Internet are not covered by any of the above categories.

IV. DOWNLOADING DATA

At the end of two weeks, the computer will prompt you to download the data logged by AppTrack to a floppy disk. This will be done automatically as shown in Figure 5.

Figure 5



Simply insert the blank disk that was mailed to you into your floppy disk drive (usually called the a:\ drive) and click **OK**. AppTrack will ask you to select the appropriate drive on your computer that accepts 3.5" disks. *Please note that you may use any blank disk if you are unable to locate the one sent to you.* If you do not wish to download the data at this time, just click **Do It Later**. AppTrack will remind you again to download the data the next time you turn on your computer.

If you choose to download the data now, a window like the one shown in Figure 6 will appear.

Figure 6

AppTrack-Question

Where is this computer located in your home? *(Note: If the computer is a laptop, please indicate where it is primarily used in the home.)*

Living Room Kitchen

Family Room Dining Room

Den / Recreation Room Garage

Adult Bedroom Other

Child Bedroom

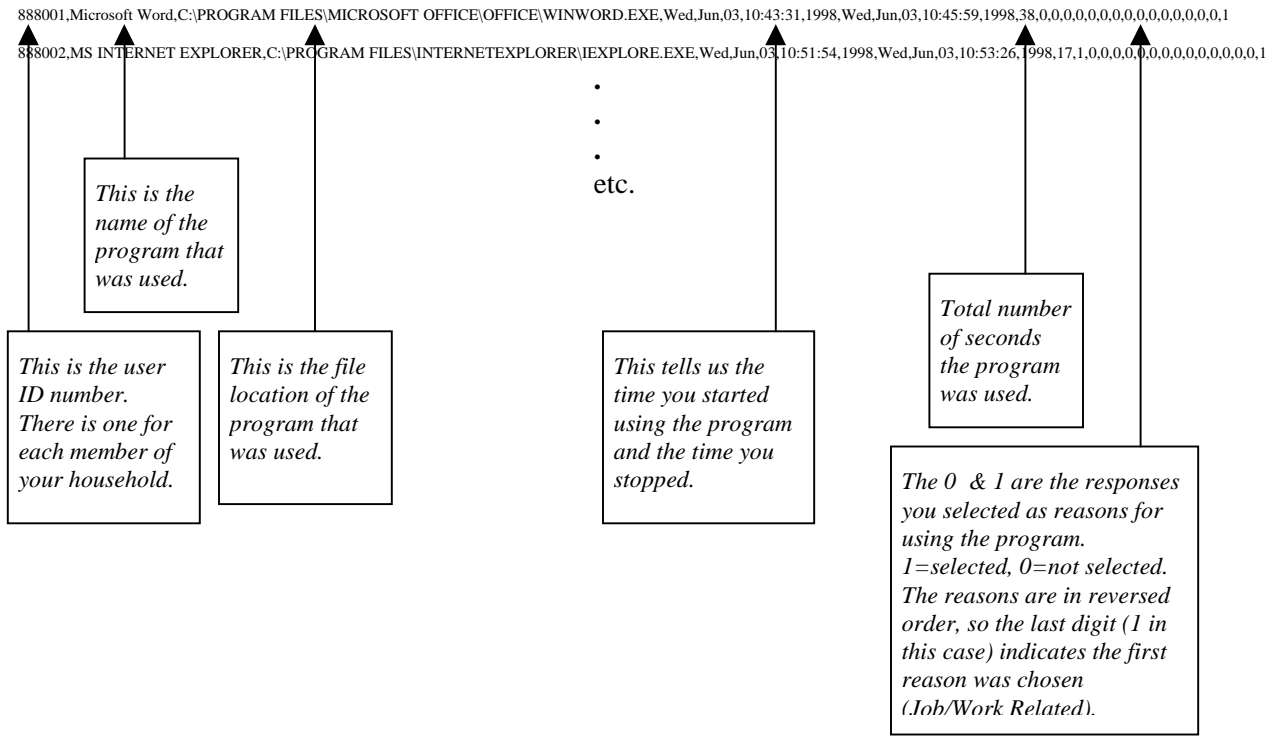
Home Office

Simply select from one of the options listed. If the computer you are downloading the data from is a laptop, please indicate where in your home the laptop is used most often. Once you have made your choice, click and follow the instructions on the computer screen to complete the download process.

Once the data have been downloaded to the disk, place it in the stamped self-addressed disk mailer and mail it to Field Research Corporation or, if you no longer have the disk mailer, place it in a protective mailer and send it to:

Project NOAH II
Field Research Corporation
550 Kearny St., # 900
San Francisco, CA 94108-2527

To view a copy of the data that you downloaded, use your word processor to open the file called "Data.txt". The file is located at the location "C:\Program Files\GSM\Data.txt" (for Windows 3.1, it is located in "C:\AppTrack\Data.txt"). Once you open the file, you should see lines like the ones shown on the next page:

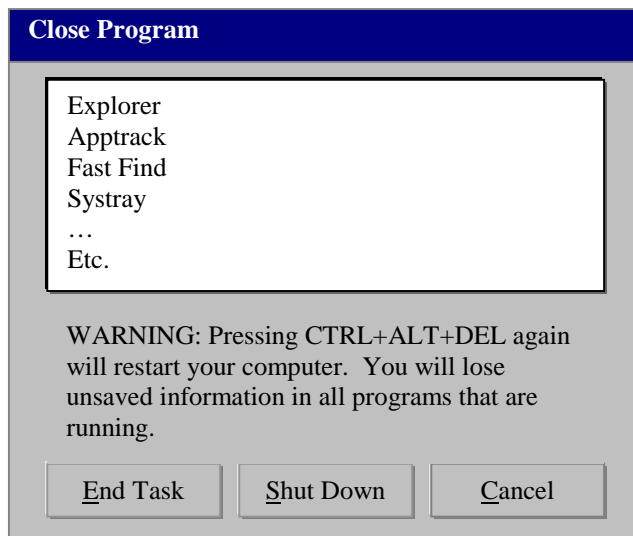


V. STOPPING OR UNINSTALLING APPTRACK

Stopping in Cases of Emergency

If for any reason you need to stop AppTrack from running on your computer, simply hold down the three keys **Ctrl** **Alt** **Delete** at the same time. You should see a window similar to the one below (see Figure 7).

Figure 7



Highlight AppTrack from the list of programs running and click the button **End Task**. This will close AppTrack immediately. AppTrack will restart the next time you turn on your computer.

Uninstalling AppTrack:

If you need to remove AppTrack from your computer, please follow the following steps.

For Windows 95/98:

1. In the **Start** menu, go to **Settings** then **Control Panel**.
2. Double click the icon **Add/Remove Software**.
3. Select AppTrack from the list and click the button **Add/Remove**.
4. Restart your computer.

For Windows 3.1:

1. In your File Manager, go to the folder “C:\AppTrack”.
2. Double click “Unsetup.exe”.
3. Restart your computer.

VI. About Project NOAH

The National Outlook for Automation in the Home (NOAH) is a research project of the Center for Research on Information Technology and Organizations (CRITO) at the University of California, Irvine and is funded by a grant from the National Science Foundation. The main objective of the study is to examine the nature and scope of personal computer use by American families, and the impact of computers on family life and home-based work life.

Principal Investigator – Dr. Alladi Venkatesh

Dr. Alladi Venkatesh is Professor of Management in the Graduate School of Management and Associate Director of CRITO at UC Irvine. His research focuses on the diffusion of information technologies to households, work-at-home computers, and design of new technologies for the home.

Research Specialist – Debora E. Dunkle

Dr. Debora E. Dunkle is a Research Specialist in CRITO. Her responsibilities include database management, analysis and computing support for CRITO faculty associates and research fellows, maintenance of the CRITO Data Archive, and managing of survey operations.

Research Associate – Eric Shih

Mr. Eric Shih is a Research Associate in CRITO and Ph.D. candidate in the Graduate School of Management at UC Irvine. His research interests are diffusion of information technologies to households, consumer behavior, and new product development. He is also the contact person for AppTrack.